

EMBOSSSED PANELS

INSTALLATION GUIDE

This guide is presented in good faith to assist in the installation of Embossed panels. It is not intended as an all-encompassing guide, and a professional qualified installer is recommended for optimum results.

Woven Image accepts no responsibility for installation actions taken or not taken. Please refer to Woven Image Pty Ltd. Terms of Trade.

This installation guide contains only recommendations; if you have any questions about installation techniques please contact your distributor or Woven Image sales representative.

Please note:

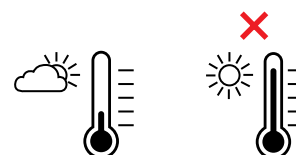
- Allow for thickness variations due to manufacturing tolerances and any minimal unevenness of substrate.
- Exact colour matching cannot be guaranteed between batches.
- Fibre mix and surface texture may vary.
- Please check that all panels are the correct design, colour, shape and batch number (if requested).
- Stickers with the Woven Image logo are placed in the same corner of each plain panel to assist with correct panel orientation.
- No claims will be accepted after panels are installed.
- Ensure appropriate work safety regulations are met, e.g. protective clothing, eyewear and respiratory equipment.

HANDLING & STORAGE

Carry boxes and panels **upright**



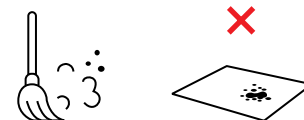
Store in a **cool dry** place, with **no direct sun**.
Avoid **65°C or greater**



Store boxes and panels **flat**



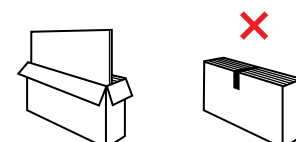
Keep all **surfaces clean** for storage and fabrication



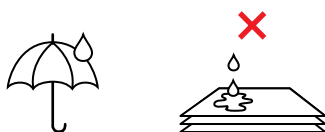
Wear **gloves** for handling **light colours**



Upon delivery, **inspect** all goods for order **correctness** and **damage**



Keep **dry** and **avoid humidity**



Protect the **edges**



EMBOSSSED PANELS

INSTALLATION GUIDE

INSTALLATION

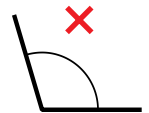
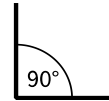
This guide is for a direct fix method with butt joining side by side.

Gem, Ion, Zen, Pico, Umi and Nalu are non-woven products that can vary by up to 7% in thickness which is a natural characteristic of this material. The formed shapes can therefore vary in depth from panel to panel.

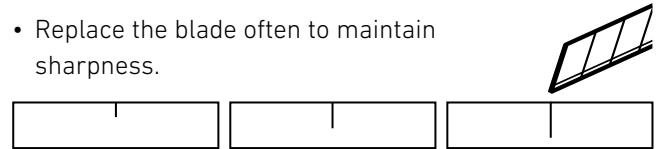
Cutting/trimming by machine

- Embossed panels can be cut on a CNC machine or using a plunge cut circular saw or band saw with wave toothing blade and a metal guide.
- Do not use a serrated blade with side-set teeth.
- Trial cut on a scrap piece first, as saws will behave differently on sheets of different thickness and density.
- Feed against the rotation of the blade or tool using a slow, consistent feed rate to prevent overheating.
- A fast feed can cause frictional heat which can melt or fuse the heated contact points with a saw blade.
- Secure sheet whilst cutting to minimise vibration.

Cutting/trimming by hand



- Ensure blade is inserted into panel at 90° to the surface to ensure square edges and best results for butt joins.
- Ensure the blade is sharp and not too long or flexible to avoid skew cuts.
- Replace the blade often to maintain sharpness.



- For best results, use multiple cuts and light pressure.
- Keep flat and use a backing mat.
- Use a secure straight edge for straight cuts.

Fixing & adhesives

- Embossed panels can be direct fixed with a commercial adhesive. It is the installer's responsibility to ensure the adhesive used is appropriate for the product and substrate it is being fixed to.
- Prepare the site with a clean drop sheet and place the panels face side down on the floor.
- Ensure the wall or ceiling surface is clean and free of dust or imperfections that could prevent adhesion. Industry standard of drywall Level 3 is recommended.
- Panels may easily flex. To avoid creasing, ensure they are well supported by a minimum of two people when positioning vertically to the substrate. Although there is

no set formula for fixing spans, it is reasonable to expect that fixing between 450mm to 600mm centres both vertically and horizontally would cause the panel to remain rigid in most circumstances.

- Adhesives should be used as per the manufacturer's instructions, and it is advised to perform a test piece prior to full installation.
- When using adhesives, position the panel to the substrate and apply even gentle pressure. Ensure to use minimum pressure at the edges to avoid adhesives showing.

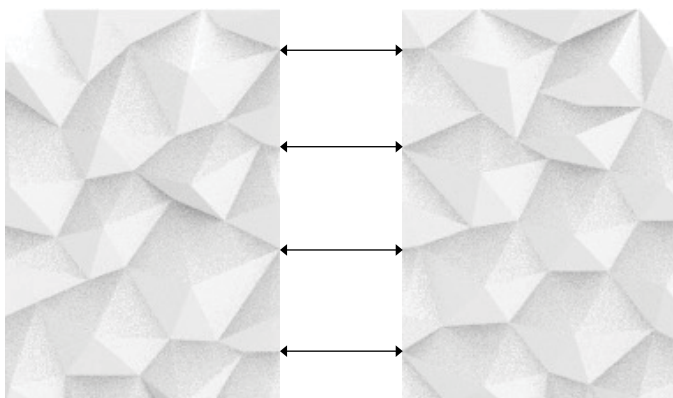
EMBOSSED PANELS

INSTALLATION GUIDE

PATTERN MATCHING

- When working with a corner wall, it is recommended to apply from the corner outwards to maintain a consistent pattern.
- To assist in accurate pattern matching on a continuous wall, Ion and Gem have been trimmed on all four edges with a straight blade (see diagrams below). Zen and Pico have been trimmed on all 4 edges with a unique 5° bevel (see diagrams on next page).
- When butting panels together, ensure the peaks and valleys in the design meet as per the diagrams shown.
- Embossed panel patterns repeat on all four sides allowing for side by side and double height applications.

ION



When butting panels together, ensure the peaks and valleys in the design meet.

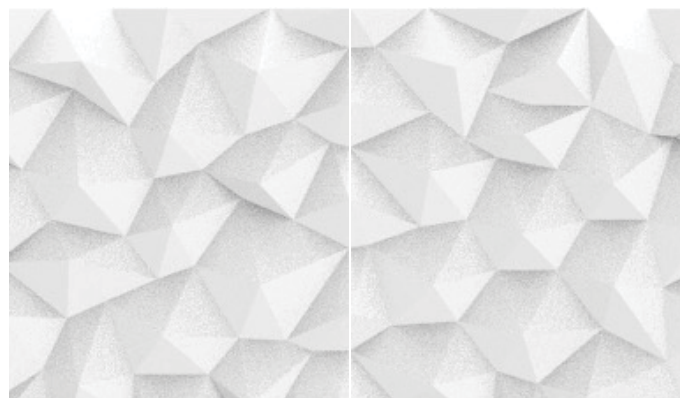
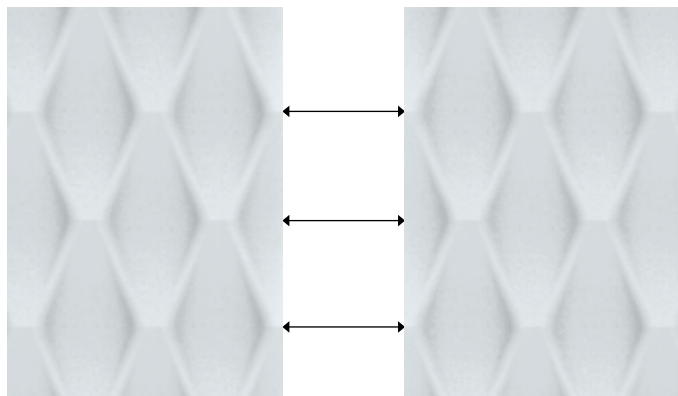
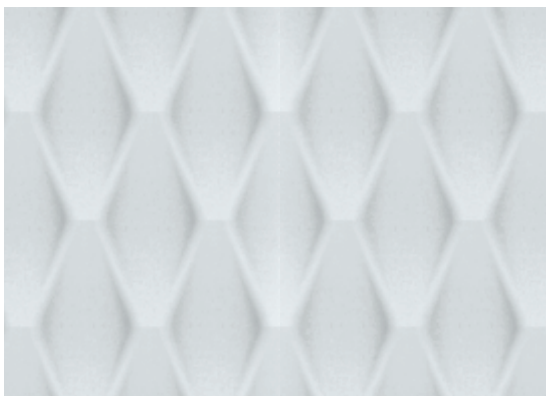


Diagram shows pattern repeat join of four panels.

GEM



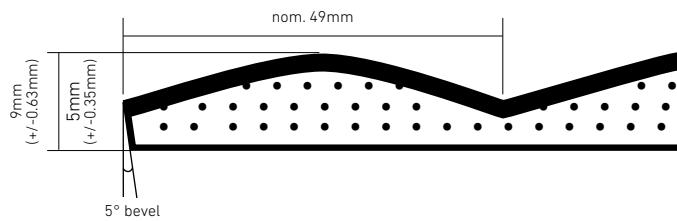
When butting panels together, ensure the peaks and valleys in the design meet.



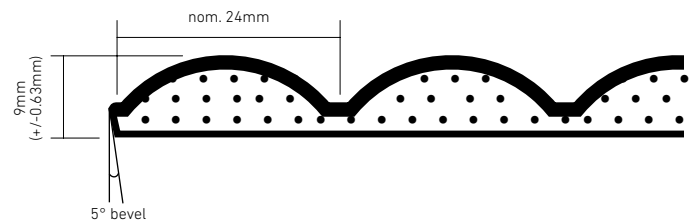
EMBOSSED PANELS

INSTALLATION GUIDE

ZEN



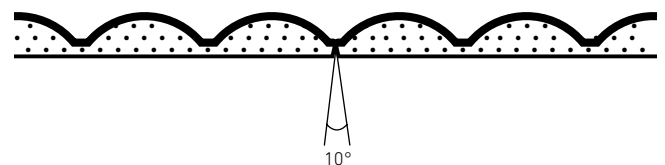
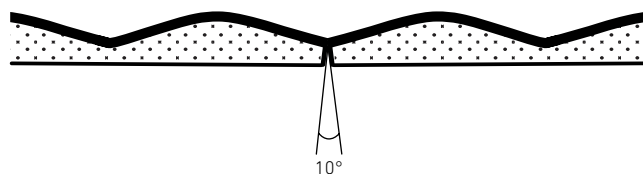
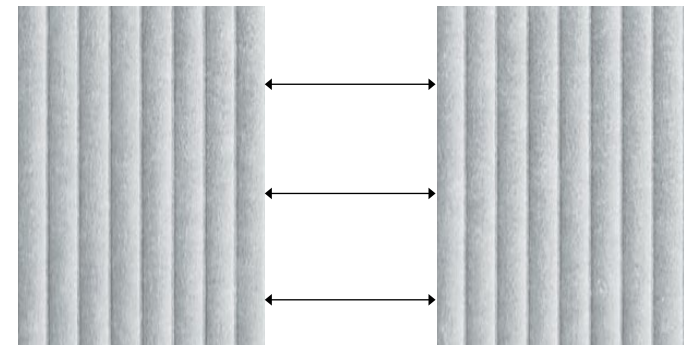
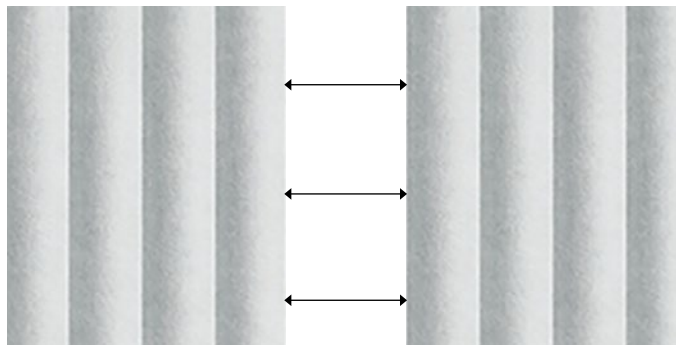
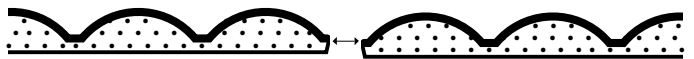
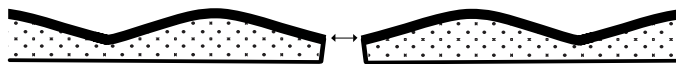
PICO



Panel alignment

- Zen, Pico, Umi and Nalu have a bevelled edge on all four sides of the panel to assist with butt joining.

- Align from the bottom of the valley as shown until the surface of the panels meet, a small unseen void will be present as shown below.



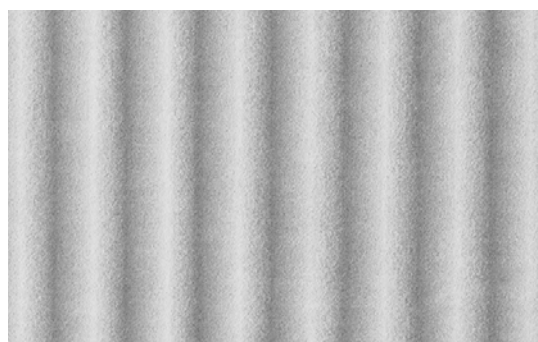
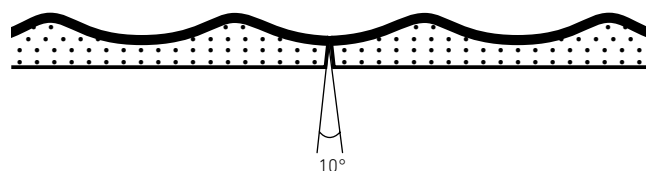
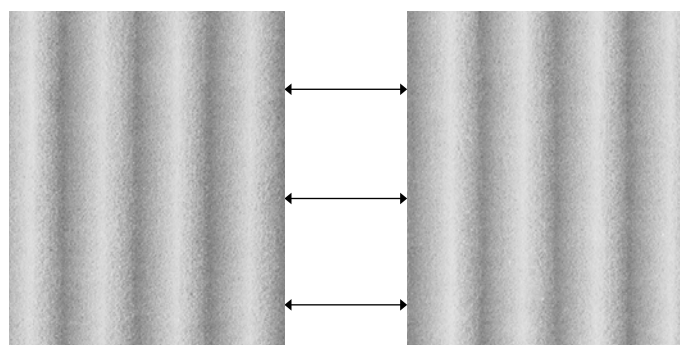
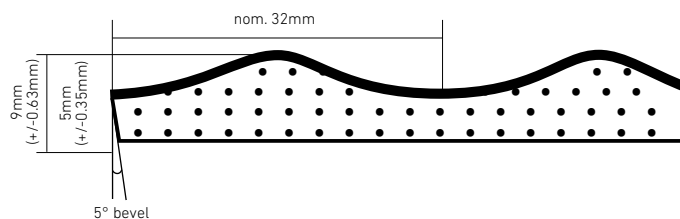
Double height installation

- For double height installations, trim the top and bottom of the panels with a straight blade at 90° to the panel to remove the bevel edge. Removing this slight scalloped effect from the ends will result in a smoother join.

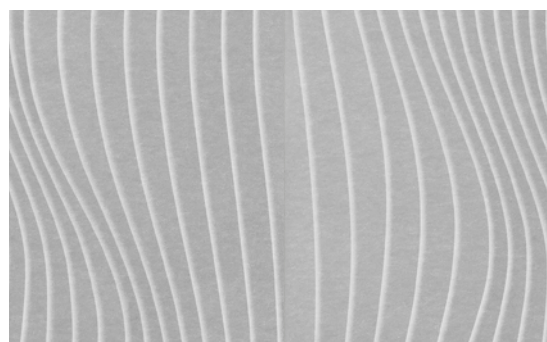
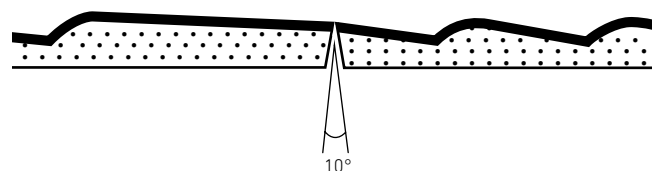
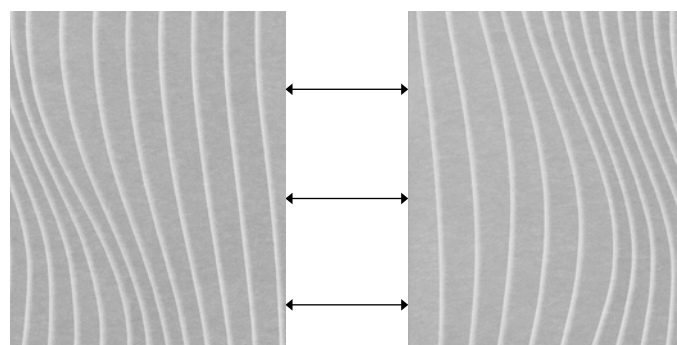
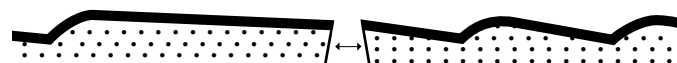
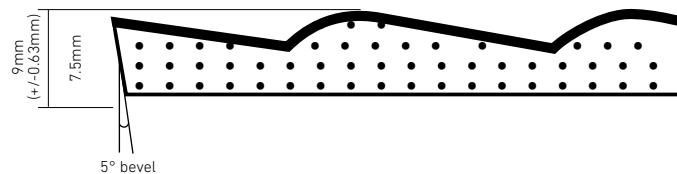
EMBOSSED PANELS

INSTALLATION GUIDE

UMI



NALU



Double height installation

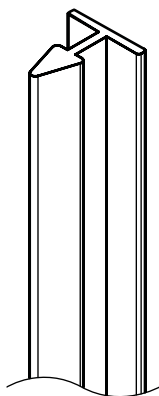
- For double height installations, trim the top and bottom of the panels with a straight blade at 90° to the panel to remove the bevel edge. Removing this slight scalloped effect from the ends will result in a smoother join.

EMBOSSSED PANELS

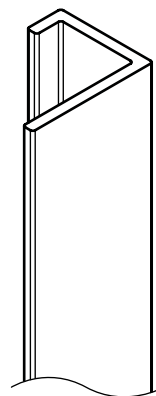
INSTALLATION GUIDE

TRIM PROFILES

Woven Image trim profiles come in 3000mm lengths, these can be easily trimmed on site using an appropriate drop saw or hack saw to match the height of the panel install.



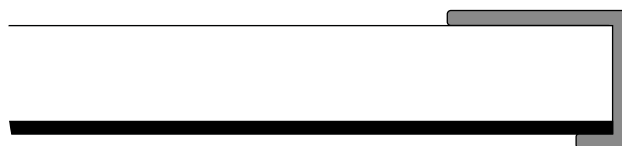
T-Joiner



9mm edge trim

9mm EDGE TRIM

The 9mm edge trim is used to cover the edges of embossed panels at the end of a wall. Prior to fixing the panel to the wall, friction fit the trim onto the edge of the panel. Proceed with install of the panel as per the instructions on the previous pages.



Optional: For added security, a small bead of adhesive may be applied inside the trim channel.

T-Joiner

The T-Joiner can be easily installed between two panels that have been direct fixed to the wall. After ensuring the joiner runs the full length of the join, simply press the piece into the gap between the panels. The shape of the joiner will ensure a snug friction fit.

